



2023 Annual Report of the Chautauqua Lake & Watershed Management Alliance

Presented at the May Member Meeting, The Lawson Center, Bemus Point, NY & via Zoom

Randall Perry, Executive Director, Chautauqua Lake & Watershed Management Alliance

May 9, 2024



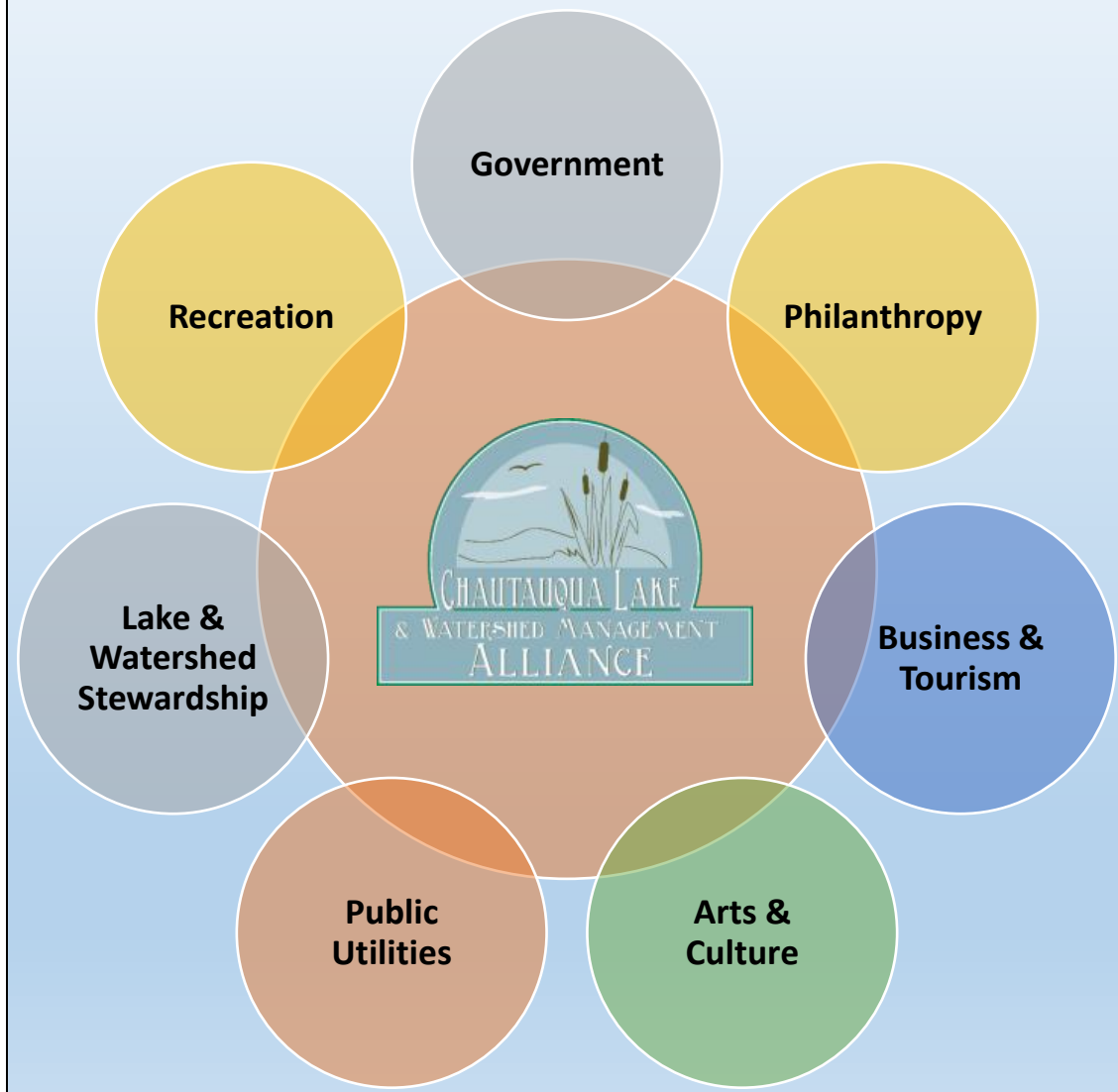
Founding Members

- Chautauqua - Cattaraugus Board of Realtors
- Chautauqua County Chamber of Commerce
- Chautauqua County Government
- Chautauqua County Soil & Water Conservation District
- Chautauqua County Visitors Bureau
- Chautauqua Institution
- Chautauqua Lake Association
- Chautauqua Lake Fishing Association
- Chautauqua Lake Partnership Owners Association
- Chautauqua Utility District
- Chautauqua Watershed Conservancy
- Holmberg Foundation
- Jamestown Audubon Society
- The Lenna Foundation
- Mayville - Chautauqua Community Chamber of Commerce
- NYS Office of Parks, Recreation and Historic Preservation - Allegany Region
- North Chautauqua Lake Sewer District
- Roger Tory Peterson Institute
- South & Center Chautauqua Lake Sewer District
- Town of Busti
- Town of Chautauqua
- Town of Ellery
- Town of Ellicott
- Town of North Harmony
- Village of Bemus Point
- Village of Celoron
- Village of Lakewood
- Village of Mayville

History & Structure of Our Alliance

- ❑ 501c3 Non-Profit Member Organization
 - ❖ 31 Founding Members
- ❑ Evolved from the Chautauqua Lake Management Commission (CLMC) in late 2014
- ❑ Established for the benefit of all lake and watershed stakeholders
- ❑ Our Mission:

The CLWMA, working in collaboration with lake and watershed-related organizations, municipalities and other stakeholders, will promote and facilitate implementation of recommendations from the Chautauqua Lake Watershed Management Plan and the Chautauqua Lake Macrophyte Management Strategy by prioritizing projects, securing funding and allocating resources.





Founding Members

- Chautauqua - Cattaraugus Board of Realtors
- Chautauqua County Chamber of Commerce
- Chautauqua County Government
- Chautauqua County Soil & Water Conservation District
- Chautauqua County Visitors Bureau
- Chautauqua Institution
- Chautauqua Lake Association
- Chautauqua Lake Fishing Association
- Chautauqua Lake Partnership
- Chautauqua Property Owners Association
- Chautauqua Utility District
- Chautauqua Watershed Conservancy
- Holmberg Foundation
- Jamestown Audubon Society
- The Lenna Foundation
- Mayville - Chautauqua Community Chamber of Commerce
- NYS Office of Parks, Recreation and Historic Preservation - Allegany Region
- North Chautauqua Lake Sewer District
- Roger Tory Peterson Institute
- South & Center Chautauqua Lake Sewer District
- Town of Busti
- Town of Chautauqua
- Town of Ellery
- Town of Ellicott
- Town of North Harmony
- Village of Bemus Point
- Village of Celoron
- Village of Lakewood
- Village of Mayville

History & Structure of Our Alliance

- Board of Directors, n = 9**

 - ❖ Elected by Members, from the Membership
 - ❖ Cross section of government/NGO leaders from around Chautauqua Lake
 - ❖ County (2), Towns/Villages (3), At-Large (4)

- Staff, n = 3**

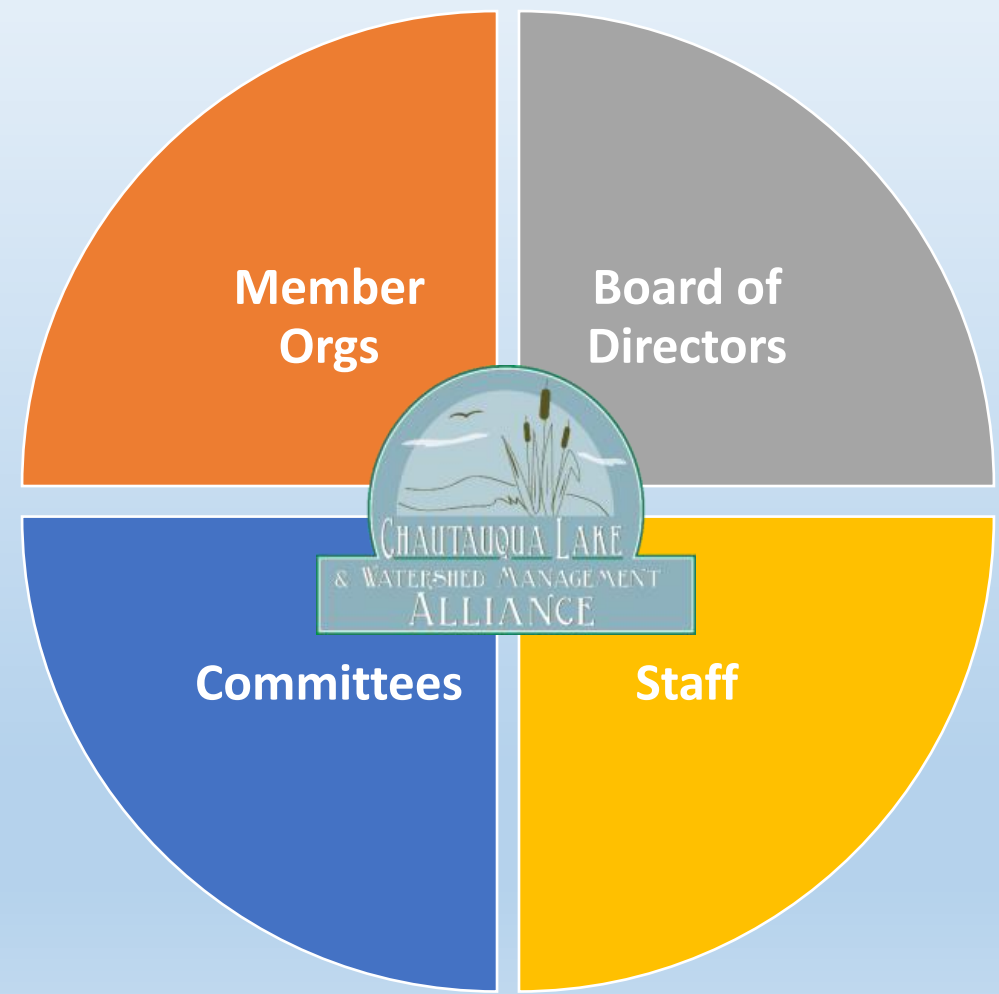
 - ❖ Fisheries, communications, water/environmental
 - ❖ Cross-trained, capacity flexes based on need

- Committees**

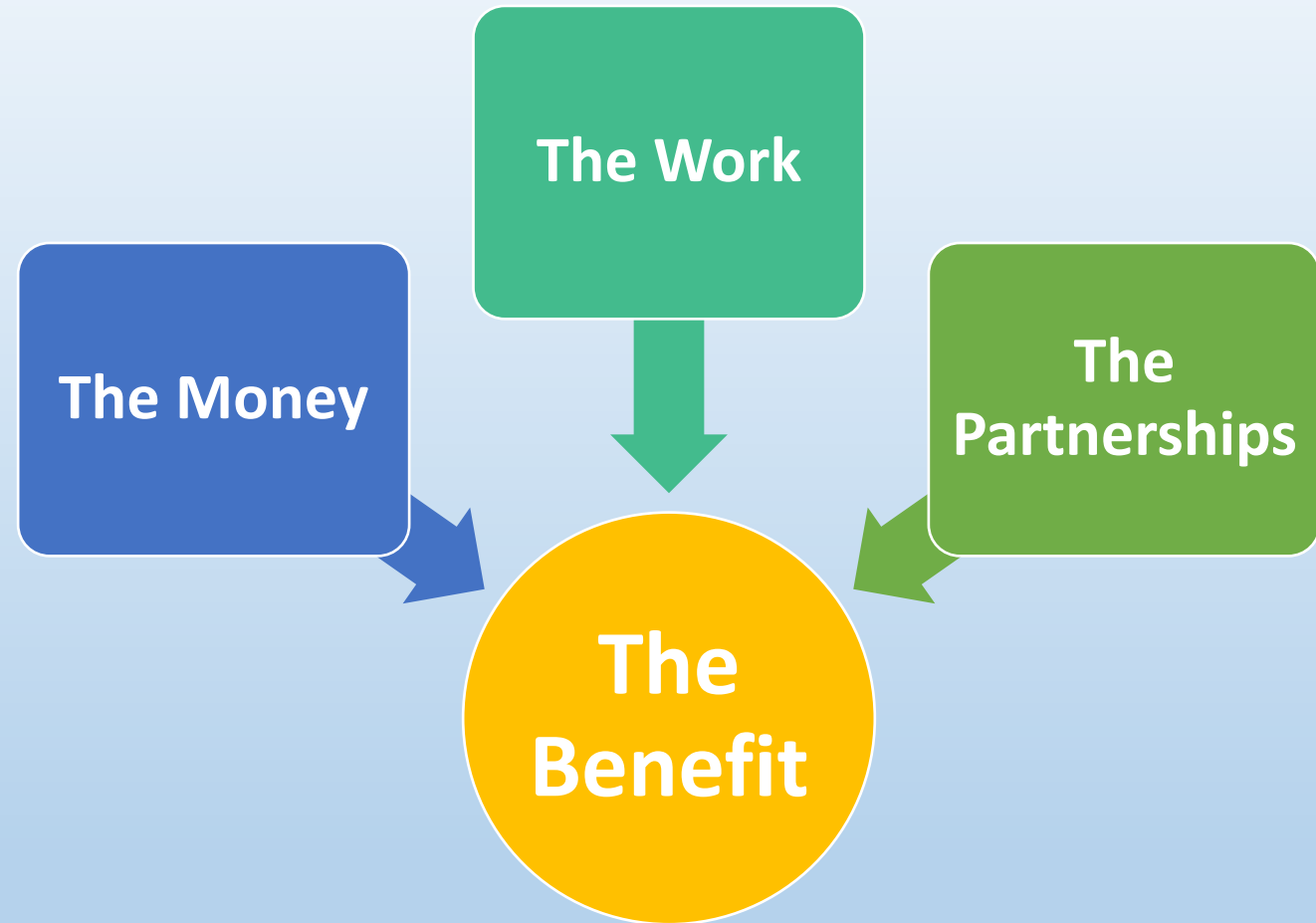
 - ❖ Lake Management Committee
 - ❖ Watershed Management Committee
 - ❖ Data Analysis & Research Committee

- Member Organizations**

 - ❖ 31 Founding Members



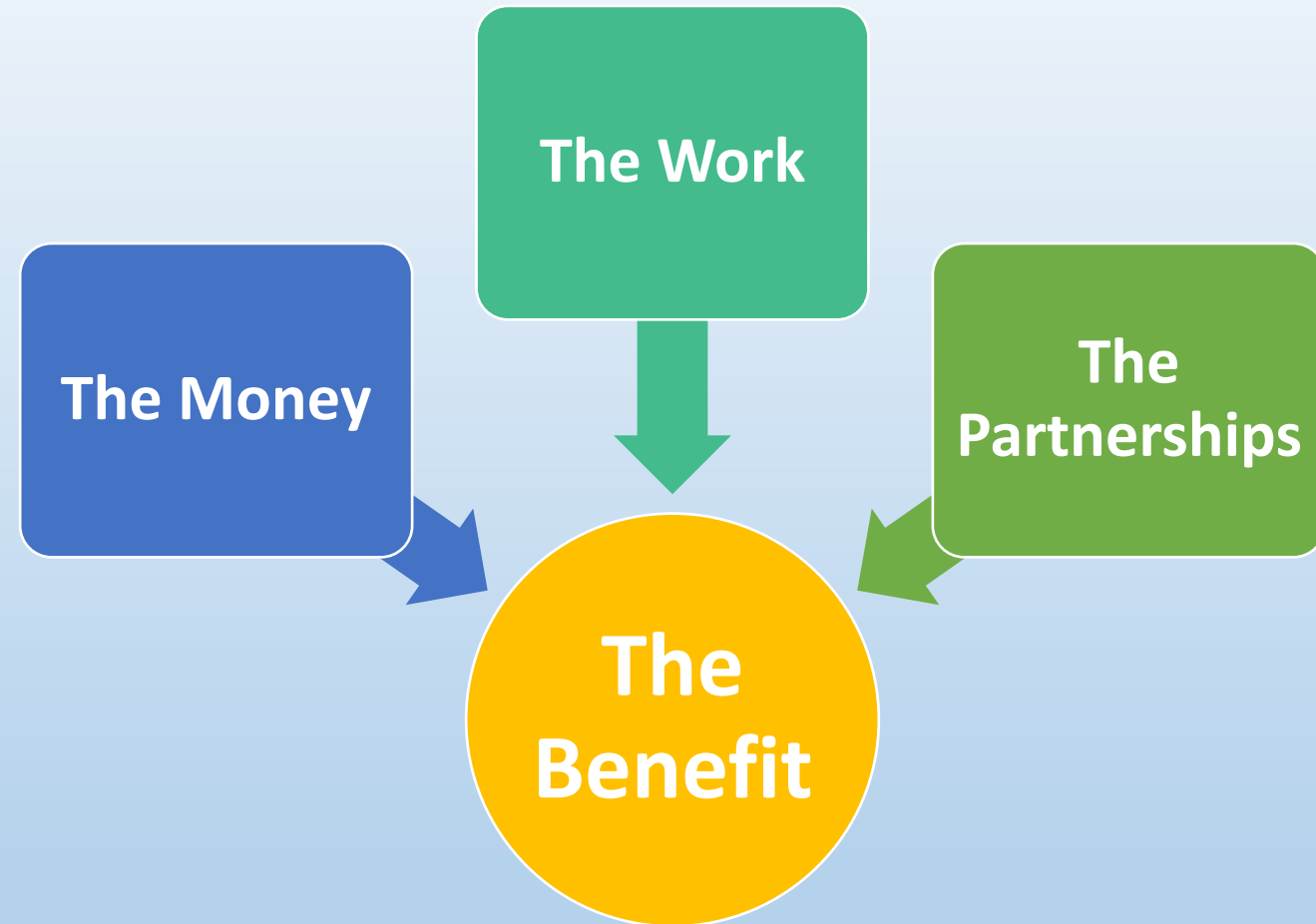
History & Structure of Our Alliance



History & Structure of Our Alliance

Thank you!

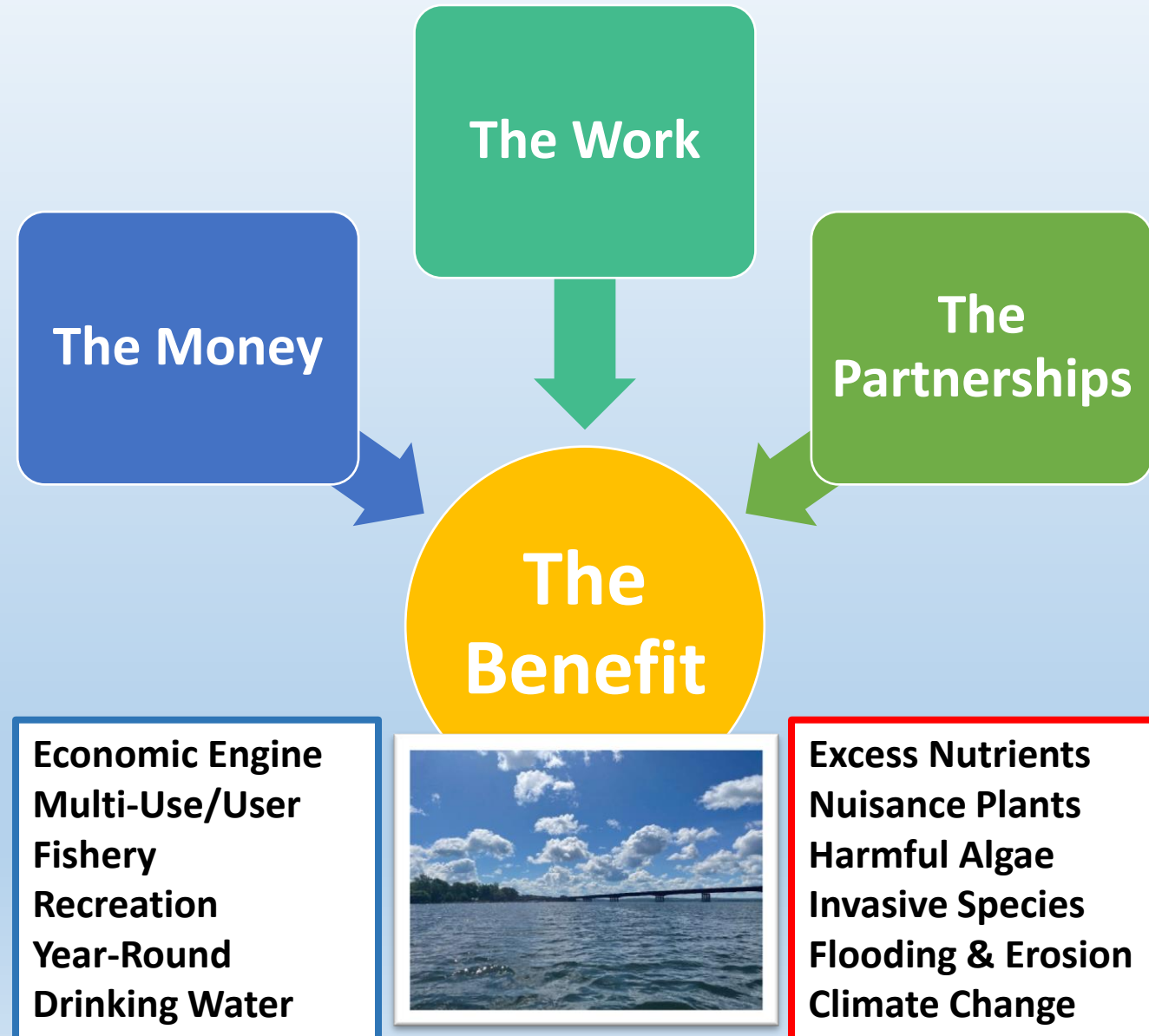
- Members and founders of the Chautauqua Lake Management Commission (CLMC)
- Our Founding & Current Members
- County of Chautauqua
- Ralph C. Sheldon Foundation
- Chautauqua Region Community Foundation (CRCF)
- The Lenna Foundation
- Arnold Holmberg Foundation
- Hultquist Foundation
- Gebbie Foundation
- Committee Volunteers
- Individual Contributors
- Past & Present Board of Directors
- The Scientific Research Community
- Our Lake Community's Stakeholders
- NYS & US agencies: DEC, DOS, EFC, OPRHP, USACE & more



History & Structure of Our Alliance

Thank you!

- Members and founders of the Chautauqua Lake Management Commission (CLMC)
- Our Founding & Current Members
- County of Chautauqua
- Ralph C. Sheldon Foundation
- Chautauqua Region Community Foundation (CRCF)
- The Lenna Foundation
- Arnold Holmberg Foundation
- Hultquist Foundation
- Gebbie Foundation
- Committee Volunteers
- Individual Contributors
- Past & Present Board of Directors
- The Scientific Research Community
- Our Lake Community's Stakeholders
- NYS & US agencies: DEC, DOS, EFC, OPRHP, USACE & more



Locations are approximate.
For illustrative purposes only.
Not for permit compliance.

Chautauqua Lake



Complex System, Comprehensive Focus

Offshore
Harvesters
Transports
Skimmers
Herbicides
AIS Programs

Nearshore
Mobitracs
Skimmers
Herbicides
AIS Programs

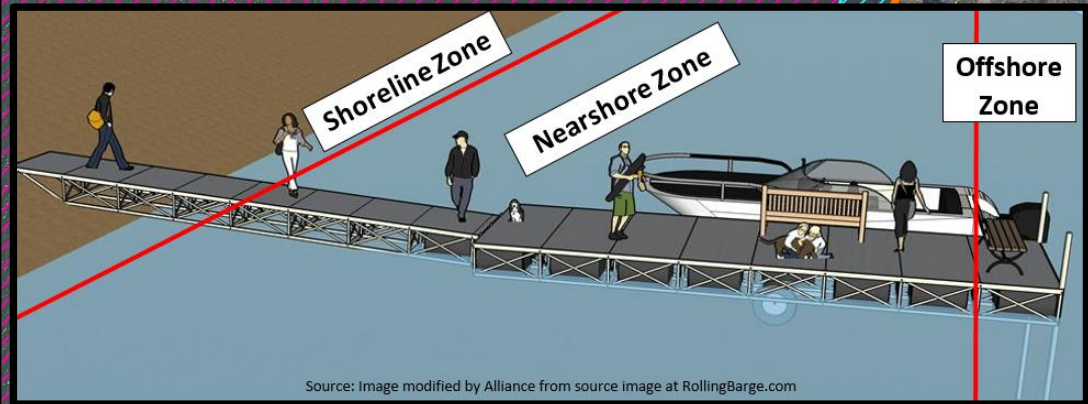
Shoreline
Shoreline Barges
Shoreline Workers

Offload Location

- Harvesters
- Skimmers
- Transports
- Shoreline Barges
- Shoreline Conveyors
- Dump Trucks

Launches & Watershed

- AIS Prevention
- Stormwater Management
- Lake Access & Amenities
- Stream Stabilization
- Vegetated Buffers
- Wastewater Management
- Agricultural Environmental Management



Legend

- Shoreline Zone
- ▨ Nearshore Zone
- ▨ Offshore Zone



Source: Image modified by Alliance from source image at RollingBarge.com

Chautauqua Lake Coordinated Workplan – 2023



Objectives

- **Prioritize both lake plant management and nearshore/shoreline cleanup**
- **Strongly position three complementary lake service programs to stand on their own, while also allowing & encouraging opportunities for collaboration**
- **Maintain flexibility within each program – and by choosing to work together – to adapt to changing lake conditions, needs, and priorities**
- **Keep day-to-day operational decision making in the hands of the service providers**
- **Complement lake management with strategic investments in plant community monitoring and management planning**
- **Maintain investment in managing and preventing emerging aquatic invasive species (AIS) threats**
- **Continue investment in watershed programs for long-term protection**

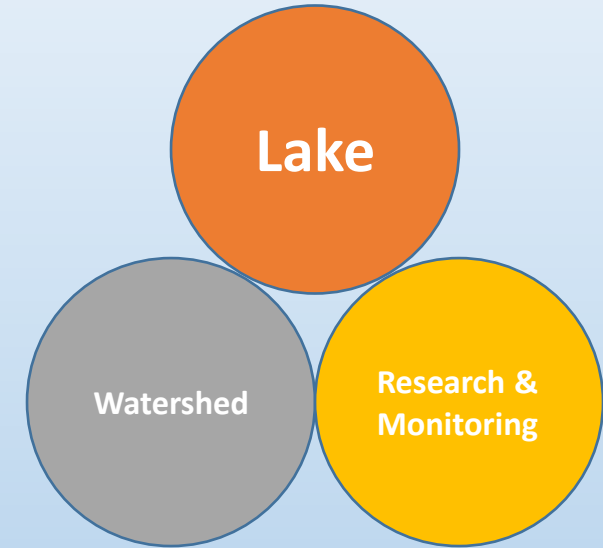
Priorities

- **Provide lakewide services to support multiple uses & users**
- **Emphasis on Lower South Basin improvements**
- **Emphasis on shoreline**
- **Prioritization based on use and economic impact**
- **Adaptive to plant conditions**
- **Late season needs**
- **New invasive species (water chestnut, starry stonewort, brittle naiad, hydrilla)**
- **Coordinating efforts**
- **Efficiency and effectiveness**
- **Maintain core long-term datasets**
- **Sharing resources and working together**



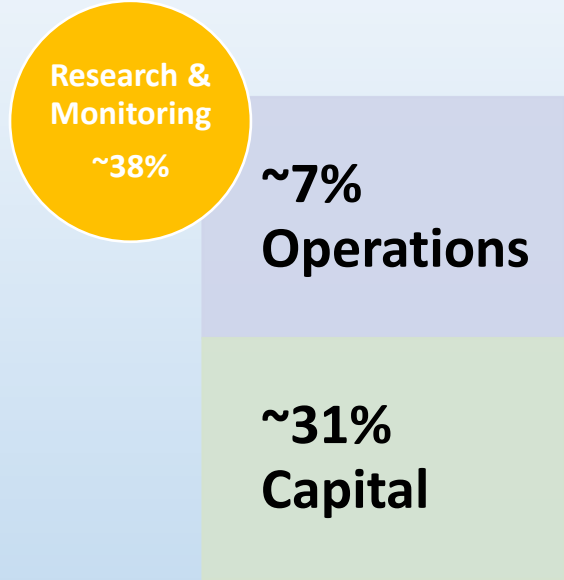
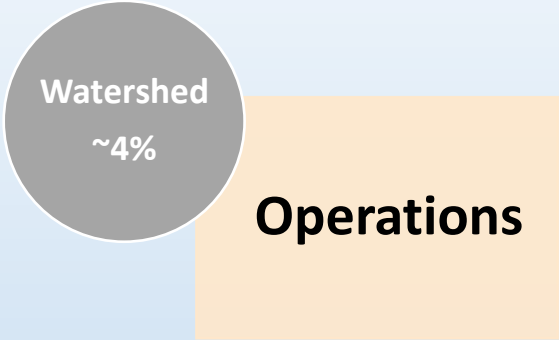
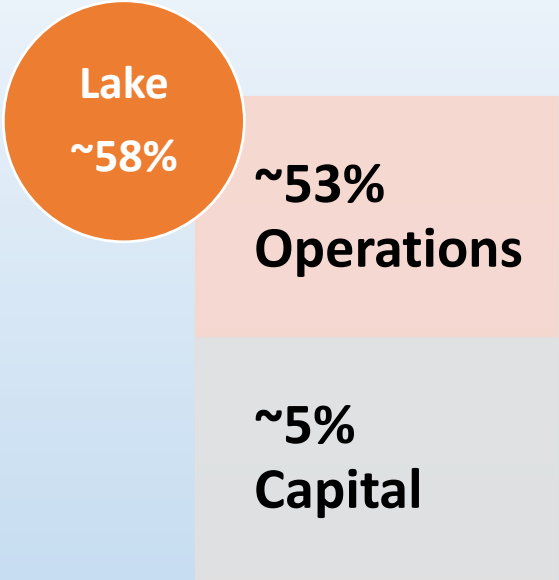
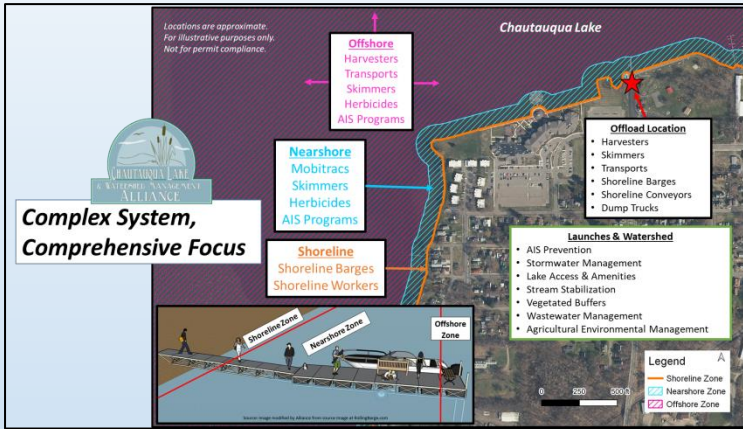
Chautauqua Lake Coordinated Work Plan – 2023

Category	Program	Organization	Apr	May	Jun	Jul	Aug	Sep	Oct	Nov
Aquatic Plant Management	Aquatic Plant Harvesting	CLA								
	Aquatic Plant Herbicide	CLP/Municipalities								
Aquatic Debris Management	Large Debris	CLA								
	Shoreline/ Nearshore	CLA, Town of Chautauqua, Village of Mayville, CLP/Harbor Hotel/Village of Celoron								
Emerging Aquatic Invasive Species	Prevention (Boat Stewards)	CLA, WNYPRISM								
	Early Detection	CWC								
	Rapid Response	CWC								
Conditions Monitoring	Plant Surveys	CLP/SLM/NCSU, CLA/SUNY Oneonta, Alliance								
	HAB/ Water Chemistry/ Quality Monitoring	NYSDEC CSLAP, CLA/SUNY ESF, Chautauqua Institution/ County/ Jefferson Project, SUNY Fredonia, BGSU, CLP								
Watershed Work	Stormwater Mgmt., Erosion Control, Green Infrastructure, Native Plants, Education/Outreach	CWC, Alliance, Municipalities, Soil & Water Conservation District, County								
Recent Capital Investments	Lake Maintenance	County, CLA, Town of Chautauqua, CLP/ Harbor Hotel	Aquatic Plant Harvester, Aquatic Plant Transport, Mobitracs, Shore Conveyor, Forklift							
	Research & Monitoring	County, Chautauqua Institution	Tributary Monitoring Stations, Research Support Boat							

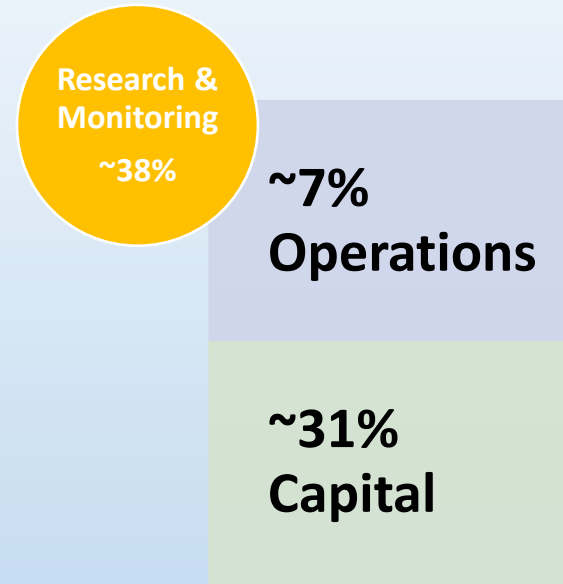
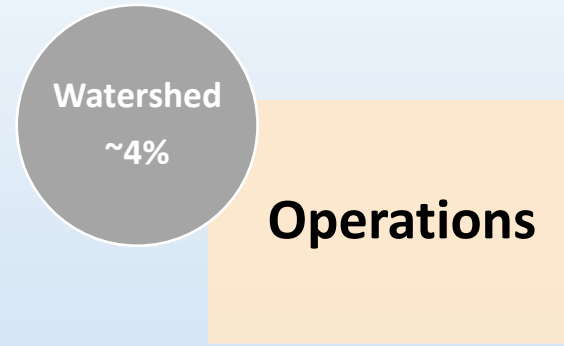
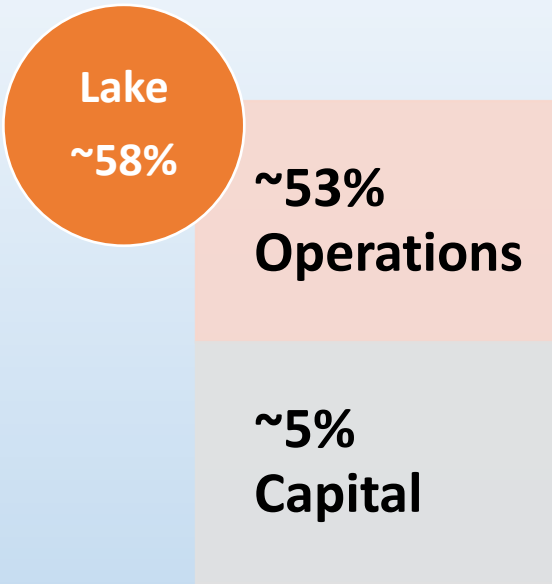
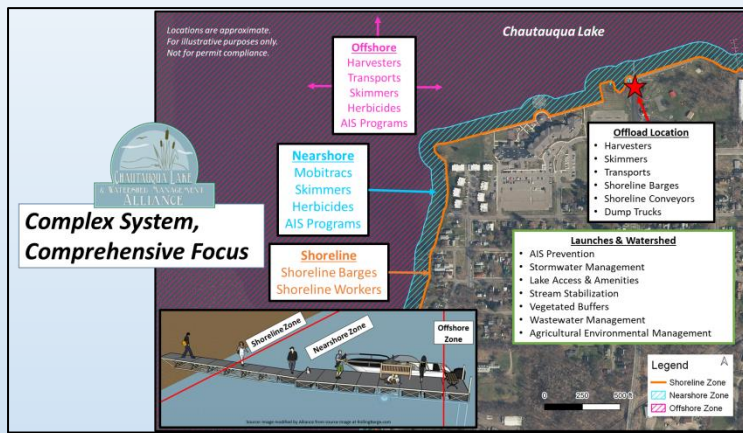


- Operations
- Capital Investments

Chautauqua Lake Coordinated Workplan – 2023



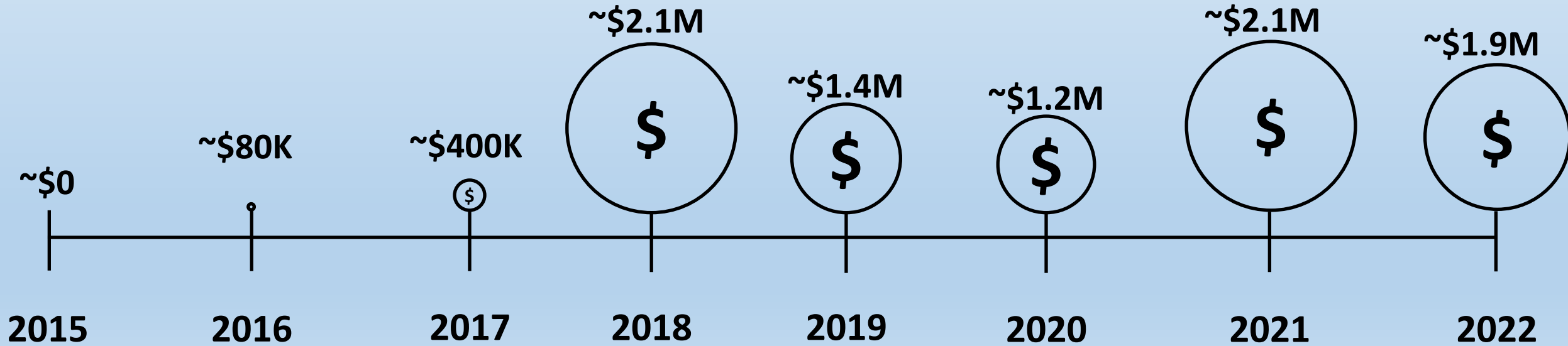
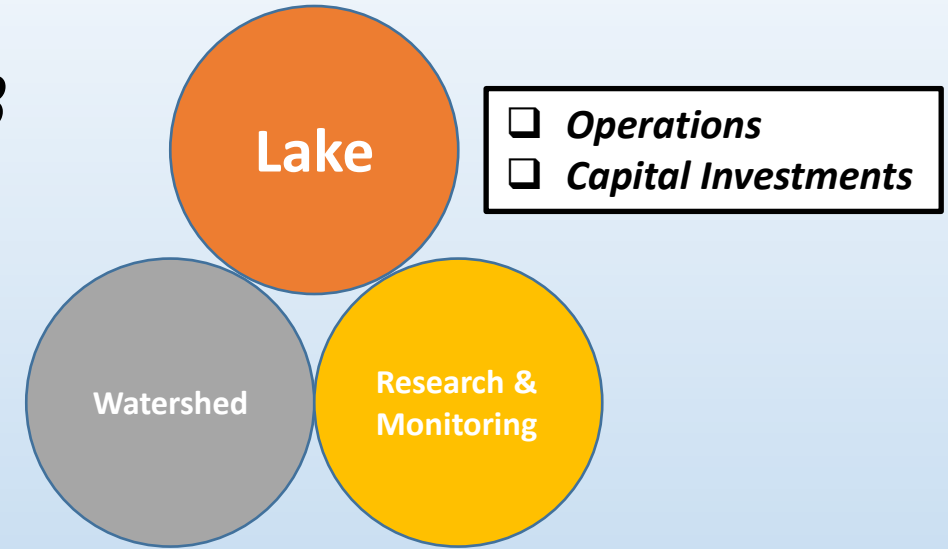
Chautauqua Lake Coordinated Workplan – 2023



- **Local Allocations Overall ca. 2017-2023:**
~73% Lake Maintenance | ~8% Watershed | ~19% Research & Monitoring
- **Local & Outside Allocations Overall ca. 2015-2023:**
~37% Lake | ~52% Watershed | ~11% Research & Monitoring
- *2023 was unique with strategic capital grants.*
- *Values above do not include NYS grants, which are predominantly watershed-focused (>\$1 Million active in 2023).*
- *Values above only include Alliance-partnered funding.*

Progress through *Partnership*

- ☐ Alliance-Partnered Projects, ca. 2015 – 2023
- ☐ >100 grants/projects/programs, Valued at >\$12 Million
- ☐ Blend of *Lake, Watershed, and Research/Monitoring*



Our Members Working Together – *Battling New Invasive Species*



Ashville Bay Starry Stonewort Removal Pilot Project Modified Mobitrac Approach

- **Project Partners:** CWC (lead), Alliance, CLA, Town of North Harmony, Town of Chautauqua, Ashville Bay Marina, NYSDEC & CLP/NCSU (permit asst.).
- **Equipment:** 1 County conveyor, 2 County-owned CLA-operated skimmers, ~1 County-owned ToC-operated Mobitrac, ~2 ToC-owned Mobitracs, and 1 CLA truck.
- **Dates:** 9/26/23 & 9/27/23
- **Total Work Days:** Approx. 1.5
- Project used Mobitracs to mechanically pitchfork onto skimmers starry stonewort from the ~1.5 acre area.
- Project reporting in progress by CWC, but preliminary observations indicate that pilot project was generally successful at removing large quantities of SSW from the pilot area before majority of bulbil production.
- **NYSDEC Permit No.** 9-0654-00178/00001
- **Funding:** CLWMA via County Occupancy Tax Program



Our Members Working Together – *Capital Equipment Investments*

Capital Equipment Needs Identified by Alliance Members:

- Plant harvester – **fulfillment pending delivery.**
- Plant transport – **fulfillment pending delivery.**
- Aquatic Skimmers – **fulfilled.**
- Forklift – **fulfillment pending delivery.**
- Nearshore cleanup support vessel – **fulfillment pending bid/delivery.**
- Research support boat – **fulfilled.**
- Tributary monitoring stations – **fulfilled.**
- Mobitrac dredge pump – **fulfilled.**
- Conveyor – **fulfilled.**
- Mobitracs – **fulfilled.**



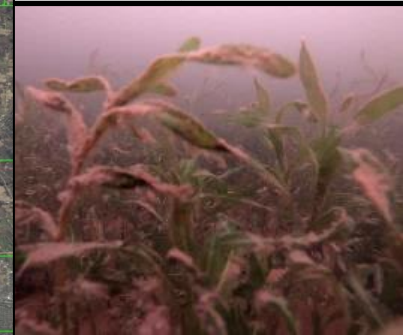
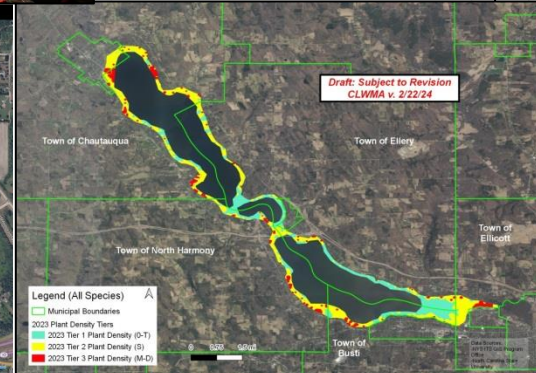
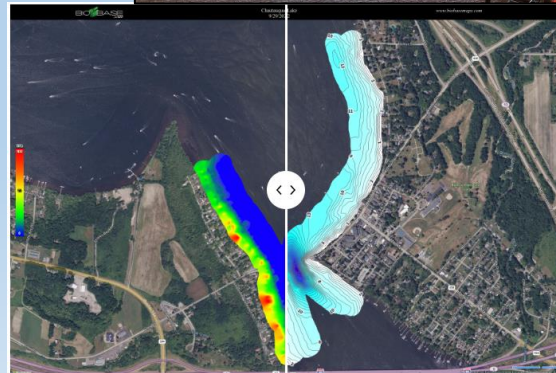
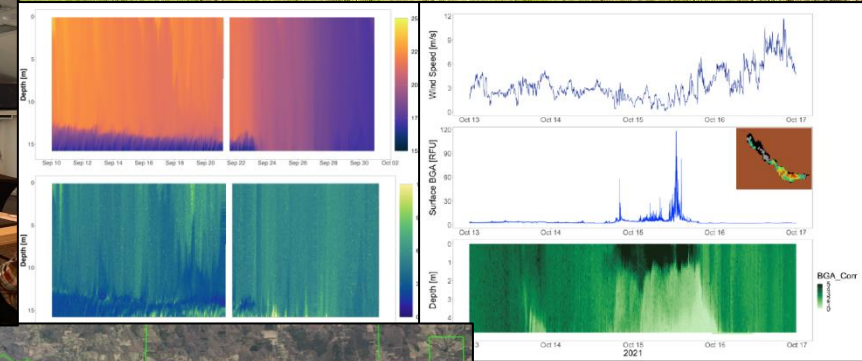
Multiple funders including – Chautauqua County/ARPA, NYSDEC, private contributors, CLA, CLP, The Lenna Foundation, Sheldon Foundation, Holmberg Foundation, and CRCF.

Our Members Working Together – *Monitoring & Research*

Comprehensive & collaborative lake research efforts with ‘science to solutions’ approach.

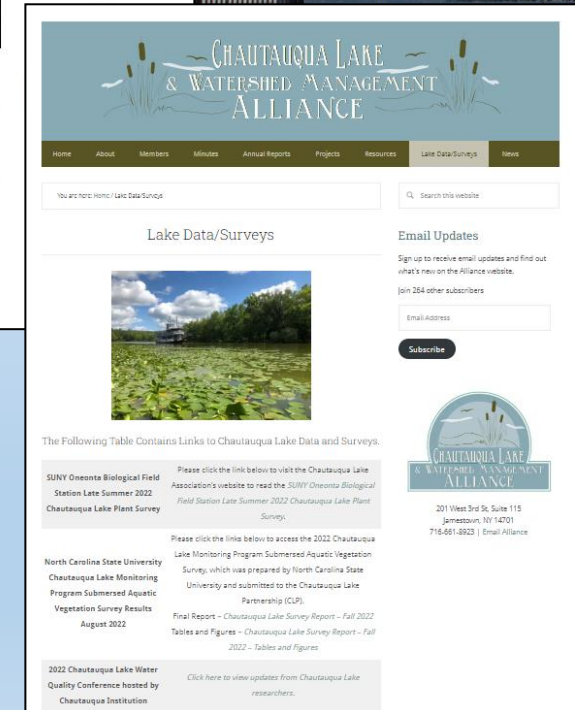
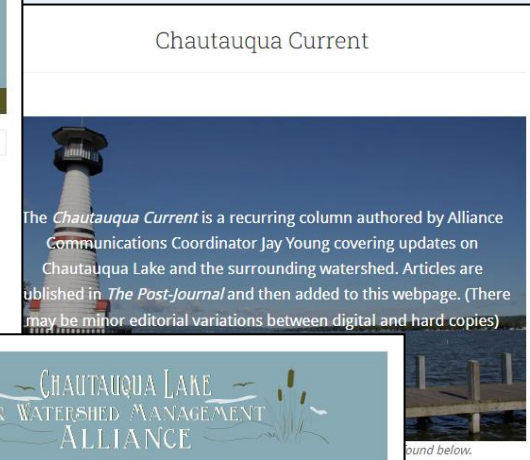
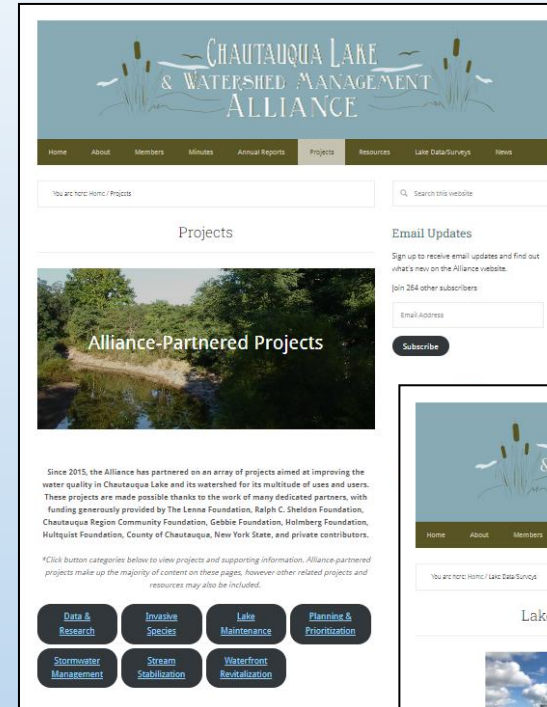
THANK YOU!

The Jefferson Project, Stantec, Bowling Green State University, SUNY Fredonia, SUNY Oneonta, SUNY ESF, CSLAP (NYSDEC & Volunteers), NYHABS, U.S. Army Corps of Engineers, North Carolina State University, Racine-Johnson Aquatic Ecologists, Rooney’s Aquatic Biologists, Ready Scout, SOLitude Lake Management, Princeton Hydro, and More



Getting the Word Out

- ❑ Recent website updates – including comprehensive ‘Projects’ page.
- ❑ Rapid dissemination of data/info.
- ❑ Hub for lake-related data and surveys and other resources.
- ❑ *Chautauqua Current* - Recurring column in partnership with The Post-Journal, covering lake and watershed topics
- ❑ Meetings, press releases, emails, etc.
- ❑ Build trust, build interest & awareness... and keep it.
- ❑ Linkage of information & awareness to action & results – e.g., 2022 starry stonewort.
- ❑ **Public Board Meetings @ 4:30 PM at the Lawson Center, Bemus Point (2nd Thu of Jan, Mar, May, Jul, Sep, and Nov)**
- ❑ Please visit us at: <http://www.chautauquaalliance.org/>
- ❑ And, visit our Members’ websites to learn more.



Looking Ahead



- THANK YOU** to those who have helped get us here!

- Upcoming opportunities: 6/2 Lake Symposium; 6/22 Lake Conference; 7/11 & 9/12 & 11/14 CLWMA Public Mtgs., and more**

- 2024 Coordinated Lake Work Plan led by Members**
- Planning and coordinating for 2025**
- Managing stable of active NYS grants in 2024 and beyond**
- 2024 NYS Consolidated Funding Application opportunities**
- Alliance Consolidated Local Funding Program**
- Targeted & coordinated research to fill critical data gaps**
- Prioritizing long-term datasets**
- Exploring new partnership opportunities**
- Continuing to explore more sustainable lake funding options**

Thank you for your time & support! Questions?

- ❑ **Randall Perry, Executive Director**
rperry@chautauquaalliance.org | (716) 661-8923
- ❑ **Taylor West, Project Manager**
- ❑ **Jay Young, Communications Coordinator**
- ❑ **2023 Annual Report will soon be available at:**
<http://www.chautauquaalliance.org/annual-reports/>
- ❑ **Website:** <http://www.chautauquaalliance.org/>



Founding Members

- Chautauqua - Cattaraugus Board of Realtors
- Chautauqua County Chamber of Commerce
- Chautauqua County Government
- Chautauqua County Soil & Water Conservation District
- Chautauqua County Visitors Bureau
- Chautauqua Institution
- Chautauqua Lake Association
- Chautauqua Lake Fishing Association
- Chautauqua Lake Partnership
- Chautauqua Property Owners Association
- Chautauqua Utility District
- Chautauqua Watershed Conservancy
- Holmberg Foundation
- Jamestown Audubon Society
- The Lenna Foundation
- Mayville - Chautauqua Community Chamber of Commerce
- NYS Office of Parks, Recreation and Historic Preservation - Allegany Region
- North Chautauqua Lake Sewer District
- Roger Tory Peterson Institute
- South & Center Chautauqua Lake Sewer District
- Town of Busti
- Town of Chautauqua
- Town of Ellery
- Town of Ellicott
- Town of North Harmony
- Village of Bemus Point
- Village of Celoron
- Village of Lakewood
- Village of Mayville